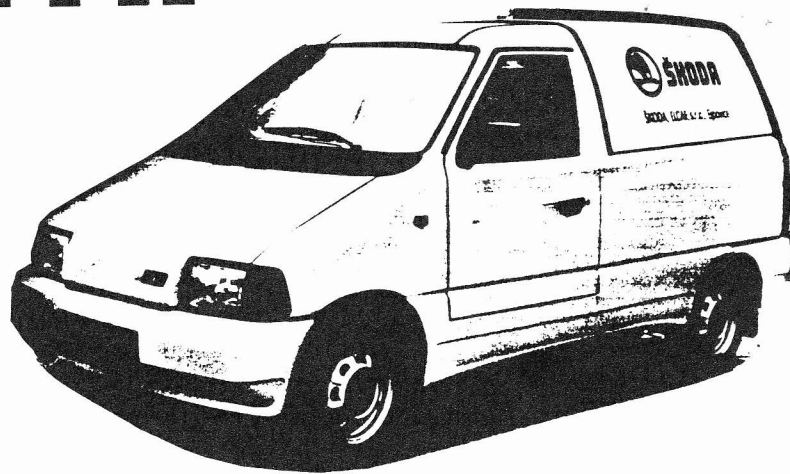


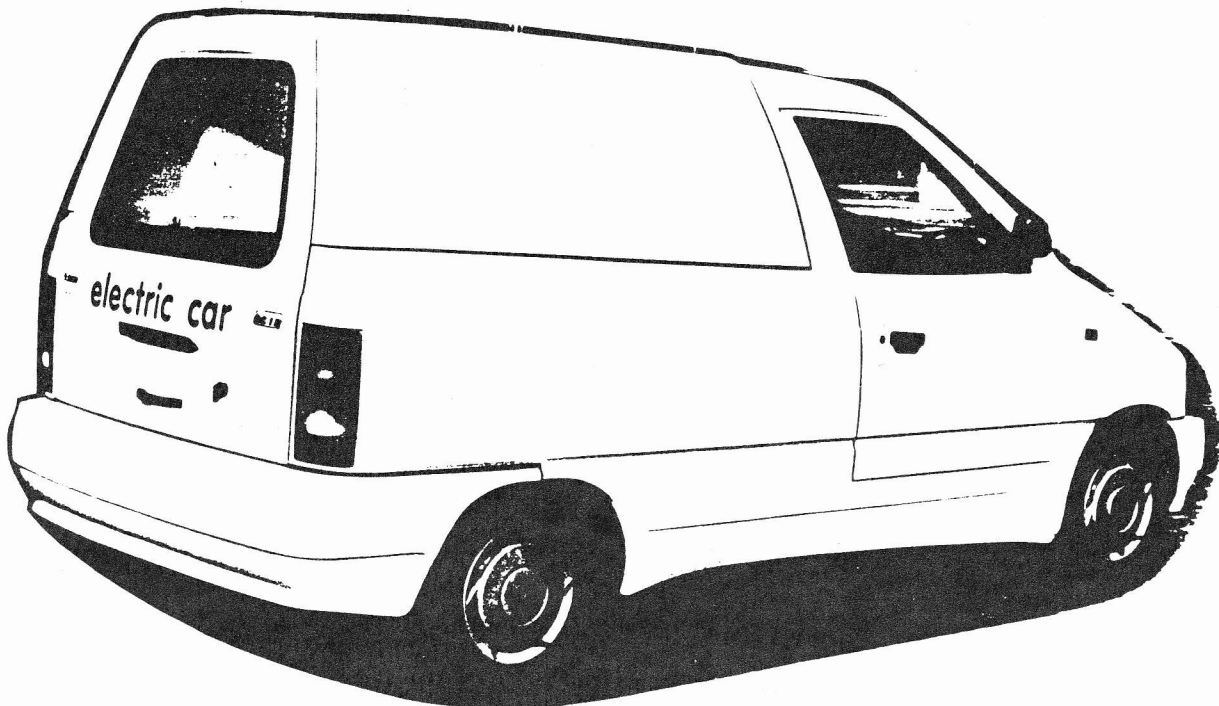


ŠKODA, ELCAR, Ejpvovice s.r.o
CZECH REPUBLIC

BETA



ELECTRIC MINIVAN



Technical Description

Weights

Total weight	1650 kg
Kerb weight	1300 kg
Payload	350 kg

Dimensions

Length	3 830 mm
Width	1 660 mm
Height	1 730 mm
Wheelbase	2 500 mm
Tracks: front	1 420 mm
rear	1 380 mm

Number of passengers 2

Chassis

Tyres	special type E-MOBIL, 165/70 R13, tubeless
Brakes	double circuit, front disc, rear drum, servo-brake with electric vacuum pump

Traction battery

- ◆ Lead acid, 14 pieces, 6V module with Battery Monitoring System
- ◆ Total voltage 84 V
- ◆ Capacity 185 Ah (C/5 rate)

Drive unit

- ◆ Front axle drive
- ◆ Manual gearbox, 4 synchronized forward speeds and reverse
- ◆ Single dry - disc clutch
- ◆ Series DC motor
- ◆ Max. power 25 kW
- ◆ Rated power 15,4 kW
- ◆ Rated voltage 84 V
- ◆ Max. rpm 5000
- ◆ Rated rpm 3000
- ◆ Max. current 550 A (0,2 sec)
- ◆ Rated current 220 A

Power control unit

- ◆ MOSFET pulse converter (chopper), max. current 350 A
- ◆ Motor speed limiter at 5000 rpm
- ◆ Possibility of regenerative braking

Board - net

- ◆ Battery 12 V / 40 Ah, maintenance free, charged by electronic DC/DC converter
- ◆ Power 500 W
- ◆ Galvanic insulation from traction circuit

Heating

- ◆ Petrol heating 5000 W
- ◆ Fuel consumption 0,5 /0,2 litre/hour
- ◆ Unleaded fuel only

On - board charger

- ◆ Input 220 V / 16 A
- ◆ Output 100 V / 20 A
- ◆ Charging time max. 12 hours

Off - board charger

- ◆ Input 380 V / 32 A
- ◆ Output 100 V / 80 A
- ◆ Charging time max. 3 hours

Road performance

- ◆ Top speed 80 km/h
- ◆ Hill climbing 16 %
- ◆ Range 60 - 80 km (urban driving)
depends on temperature of the battery and the manner of driving
- ◆ Battery energy consumption 160 Wh/km

Producer

ŠKODA, Elcar, Ejpovice, s. r. o.
330 02 Dýšina u Plzně
CZECH REPUBLIC

Tel. +42 19 945 611, --612, --663
Fax +42 19 945 651, --663